

WinNetMgr
Windows Network Manager
© Copyright 1991,
Complete Control Solutions, Inc.

ALL RIGHTS RESERVED

WinNetMgr is a shareware product. If you use it you are required to register within a reasonable (10 day) period. This will entitle you to a personalized "clean" version. You will also be notified of future upgrades and upcoming features.

If you like this program and use, please do register.

To register, send \$39.95 US to:

Complete Control Solutions, Inc.
1365 N. Orchard, Suite 300
Boise, ID 83706

The program and the associated documentation on disk may be freely distributed on the following conditions

- 1) No changes whatsoever are made to the program, its documentation or any associated files.
- 2) Anyone wishing to charge a fee for distributing WinNetMgr must have the written consent of Complete Control Solutions, Inc. No charge will be made for this consent but we need to know who is distributing it so that we can send out updates - Apply in writing to the address above.

LIMITED WARRANTY

For registered users, and users who have obtained WinNetMgr directly from the publisher only, the author warrants that the distribution disk is an accurate reproduction of the software. In the event of any defect in the duplication process the author will replace the disk, as long as it is returned within 30 days of receipt.

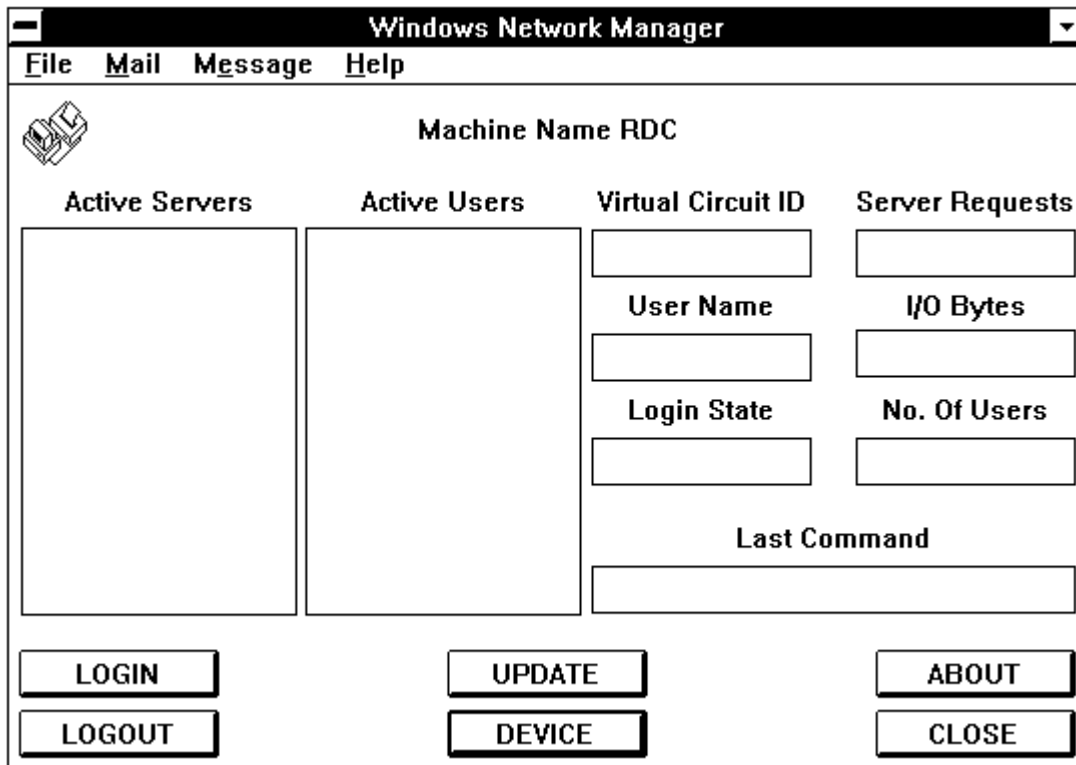
No other warranty, implicit or otherwise, including but not limited to merchantability or fitness for any particular purpose, is made. Under no circumstances will the author be liable for any loss or damage suffered by any user arising out of the supply, use, or operation of this software, whether such loss or damage be direct, consequential or otherwise.

What is WinNetMgr?

WinNetMgr is a Windows 3.0 network manager program for use with the LANtastic (R) network operating system. It allows you to the following functions from Windows:

- 1) Monitor user activity.
- 2) Login to a server.
- 3) Logout of a server.
- 4) Connect a device to a system resource.
- 5) Disconnect a device from a system resource.

Following is a display of the opening screen:



Description of Display:

Active Servers:

This shows you the servers that you are currently logged into.

Active Users:

This shows you the current users logged into the highlighted active server.

Virtual Circuit ID:

This shows you the Session ID number that the system has assigned to this users.

Server Requests:

This shows the number of requests that this users has issued to this server.

User Name:

This is the name that this user is logged in as.

I/O Bytes:

This is the number of bytes that the user has transferred to and from this server.

Login State:

This is the current state the user is in.

No. of Users:

This is the total number of users logged into this server.

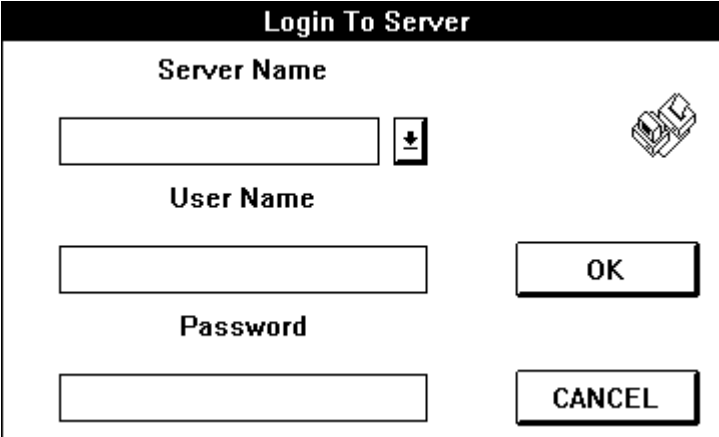
Last Command:

This is the last command this user issued to this server.

Button Descriptions:

LOGIN:

This will bring up a dialog screen to login to another server.



The image shows a dialog box titled "Login To Server". It has a black title bar with white text. Below the title bar, there are three input fields. The first is labeled "Server Name" and has a small square button with a downward arrow to its right, and a keyboard icon to its right. The second is labeled "User Name" and the third is labeled "Password". To the right of the "User Name" field is an "OK" button, and to the right of the "Password" field is a "CANCEL" button. The dialog box has a white background and a black border.

Server Name:

This is a drop down selection box you can type in a server name of press the arrow button to get a list of available servers.

User Name:

You must type in a valid user name in this box.

Password:

You must type in a valid password in this box (as you type "*" will be displayed).

OK:

Press this button when you have entered the required information.

CANCEL:

Press this to exit this dialog screen.

UPDATE:

This will update the active user information on the screen.

ABOUT:

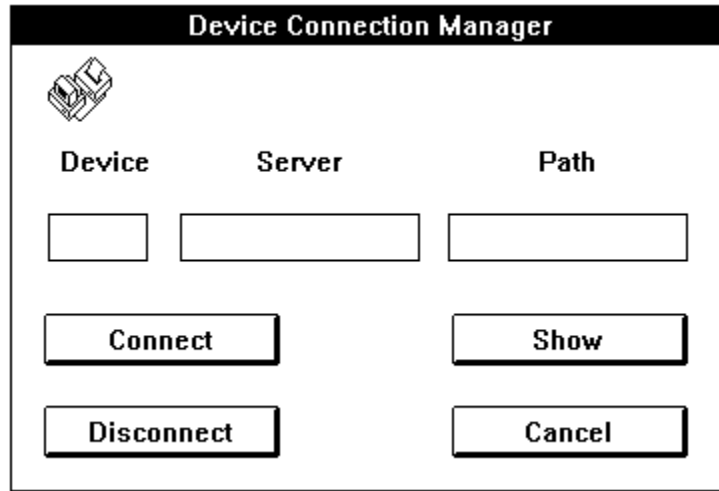
This will display information on this program.

LOGOUT:

This will logout of the highlighted active server.

DEVICE:

This will bring up a dialog screen to assign a device to a server resource.



Device:

Enter the device name you want to assign.

Server:

Enter the server name you want to connect to.

Path:

Enter the resource name you want to connect to.

CONNECT:

Press this to connect the device.

SHOW:

Press this to show the current connection for the entered device.

DISCONNECT:

Press this to disconnect the entered device.

CANCEL:

Press this to exit this dialog.

CLOSE:

This will exit the program.

MENU DESCRIPTIONS:

System:

This is a drop down menu that displays the following

Options:

Exit:

This will exit the program.

Mail:

This is a drop down menu that displays the following options:

Check Mailbox:

This menu selection is inactive in the shareware version.

Send Mail:

This menu selection is inactive in the shareware version.

Message:

This is a drop down menu that displays the following options:

Check Messages:

This menu selection is inactive in the shareware version.

Send Message:

This menu selection is inactive in the shareware version.